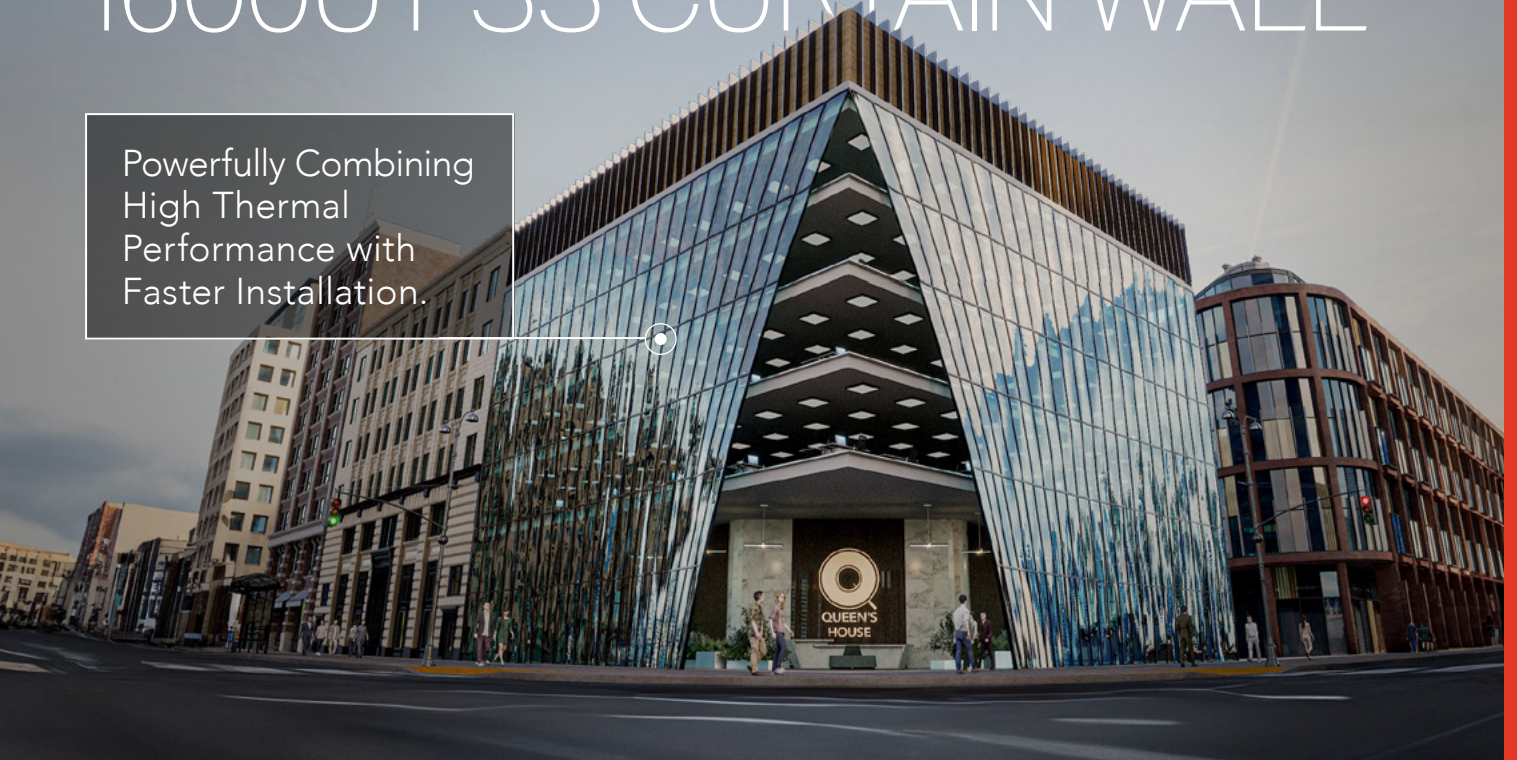




1600UT SS CURTAIN WALL

Powerfully Combining
High Thermal
Performance with
Faster Installation.



The 1600UT SS Curtain Wall System has been expertly designed to meet the building and construction industry's evolving curtain wall needs.

The 1600UT SS Curtain Wall System unites the high thermal performance of the 1600UT System™ 1 Curtain Wall with the screw spline system of the 1600 SS Curtain Wall System. Delivering ultra-thermal performance with easy installation, the 1600UT SS Curtain Wall System brings the benefits of a semi-unitized frame construction and has been tested to meet the latest seismic requirements.

Attractive Aesthetics

With a 2-1/2" (63.5mm) sightline, the 1600UT SS Curtain Wall System's screw spline concealed fastener joinery helps create a smooth, monolithic appearance on the facade.

The system also features a dual finish option, anodized finish options and painted finishes in standard and custom options.

Simple Installation

Offered with inside or outside glazed framing options, the 1600UT SS Curtain Wall System is a ladder construction system that allows for screw spline fabrication.

The 1600UT SS Curtain Wall System delivers the benefits of a semi-unitized frame construction. The vertical mullions can easily span two floors to maximize efficiency and minimize installation cost. The interlocking mullion design also helps eliminate the need for anti-buckling clips.

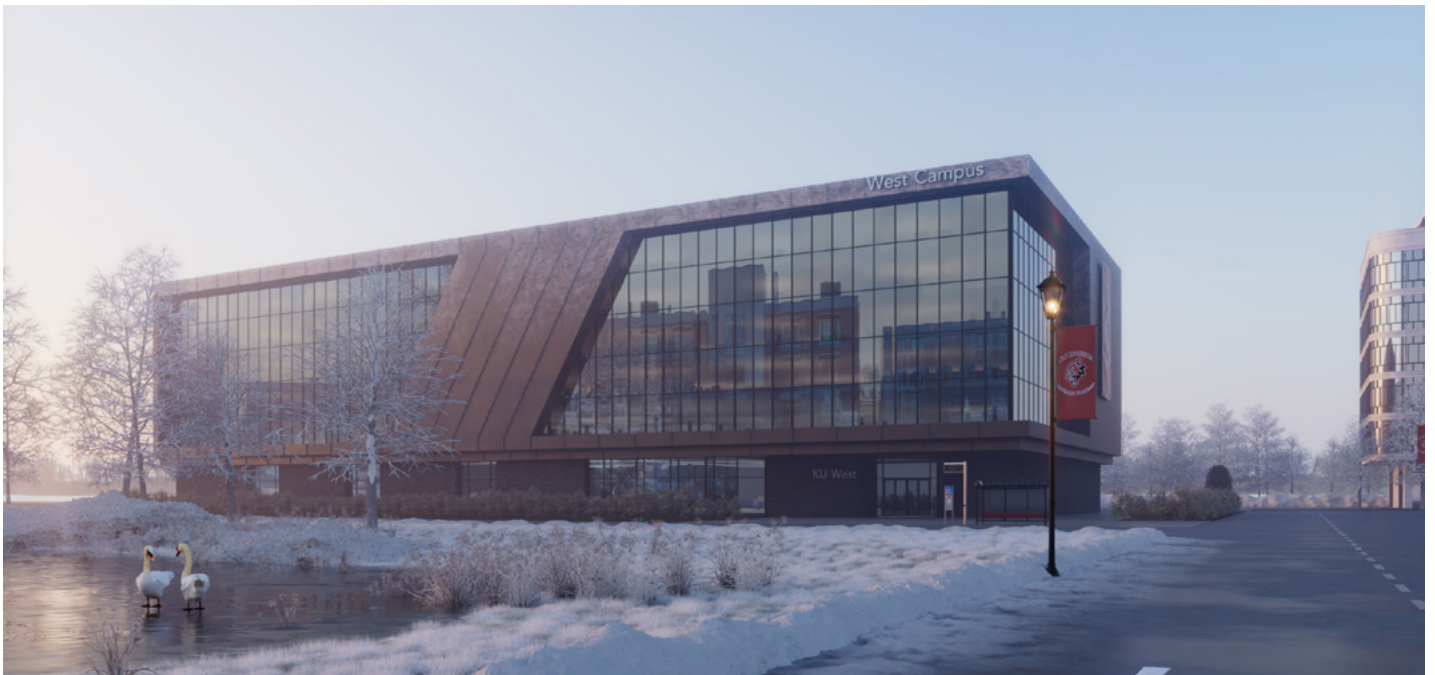
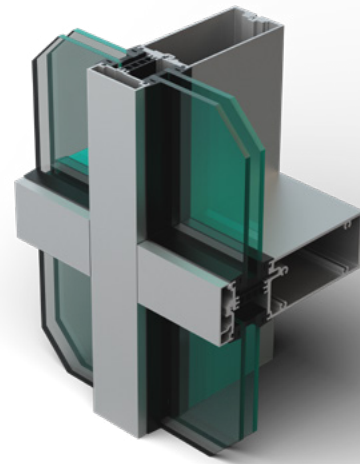
The 1600UT SS Curtain Wall System is available in four-sided captured and two-sided structural silicone glazed (SSG) – vertical.

The product features a standard 7-3/4" (196.9mm) depth system, with a 6-1/4" (158.8mm) depth system also available. Standard infill options include 1" (25.4mm), 1-1/4" (31.8mm) and 1-5/16" (33.3mm). This product provides additional standard infill options to meet acoustic requirements.

Exceptional Thermal Performance

Setting new standards in curtain wall system design, the thermally broken, high-performance 1600UT SS Curtain Wall System offers an overall frame U-factor of 0.29 while using standard 1" glass/COG (Center of Glass) 0.24. For markets with additional thermal needs, the system can achieve an overall frame U-factor of 0.24 while using 1" glass/COG 0.20.

The system can be seamlessly combined incorporated with our GLASSvent® UT and Insulpour® Thermal Entrances, making Kawneer the single-source solution for your ultra-thermal system needs.



Key Product Benefits

- Screw spline fabrication
- Tested to meet the latest seismic requirements
- Overall system U-factor of 0.24 with 1" glass/COG 0.20
- Inside or outside glazed framing options
- Smooth appearance on the facade, with a 2-1/2" (63.5mm) sightline (custom covers available)
- Silicone-compatible glazing materials for long-lasting seals
- Standard 7-3/4" (196.9mm) depth system with a 6-1/4" (158.8mm) depth system also available
- Three standard infill options provided to meet additional acoustical requirements

Sustainability

Developed with a focus on sustainable facade design, the 1600UT SS Curtain Wall System is available using low-carbon aluminum, which has a minimum 50% mixed pre- and post-consumer recycled content, with the remaining primary aluminum sourced from a hydroelectric smelter. The system provides the sustainability documentation you need, including the material transparency summary (MTS), Declare label and more.

Our BALANCE philosophy of holistic sustainability is at the heart of Kawneer, as we focus on mindfully balancing our business strategy with corporate responsibility.